

Linear unit complete

4.1□□.□□□□□□.□□□□□□.	Key (line 1)
4.1□□.□□□□□□.□□□□□□.	Subassembly ¹⁾
4.1□□.□□□□□□.□□□□□□.	Drive ²⁾
4.1□□.□□□□□□.□□□□□□.	Profile <ul style="list-style-type: none">• size• orientation ³⁾
4.1□□.□□□□□□.□□□□□□.	Shaft <ul style="list-style-type: none">• orientation ⁴⁾

□□.□□.□□□□□□□□□□□□	Key (line 2)
□□.□□.□□□□□□□□□□□□	Shaft <ul style="list-style-type: none">• number ⁵⁾• assembly ⁶⁾• Ø• material ⁷⁾
□□.□□.□□□□□□□□□□□□	Carriage <ul style="list-style-type: none">• base plate ⁸⁾• bearing<ul style="list-style-type: none">- roller ⁹⁾- bush ¹⁰⁾
□□.□□.□□□□□□□□□□□□	
□□.□□.□□□□□□□□□□□□	
□□.□□.□□□□□□□□□□□□	Belt <ul style="list-style-type: none">• type ¹¹⁾• material ¹²⁾• width
□□.□□.□□□□□□□□□□□□	Turning unit <ul style="list-style-type: none">• motor ¹³⁾• shaft end<ul style="list-style-type: none">- left ¹⁴⁾- right ¹⁴⁾
□□.□□.□□□□□□□□□□□□	
□□.□□.□□□□□□□□□□□□	

- ¹⁾ 0 = linear unit complete
1 = linear guidance
2 = carriage unit
3 = drive unit
4 = turning unit without shaft end
5 = turning unit with shaft end
6 = motor flange
7 = synchronising unit
8 = gearbox unit

²⁾ 0 = without drive
1 = toothed belt
2 = chain
3 = threaded spindle
4 = toothed rack
9 = multiple

³⁾ H = horizontal
N = neutral
V = vertical

⁴⁾ H = horizontal
V = vertical

⁵⁾ 1 = single sided
2 = double sided

⁶⁾ 2 = with guide profile

⁷⁾ shaft
 - 1 = coated steel
 - 2 = X46Cr13
 - 3 = X46Cr13

mounting elements
 - steel, galvanised
 - steel, galvanised
 - VA

⁸⁾ 1 = alu plate
2 = profile
3 = profile frame

⁹⁾ 11 = 2×fixed / 2×eccentric, adjustable topside
12 = 2×fixed / 2×eccentric, adjustable underside
15 = 4×eccentric, adjustable topside
16 = 4×eccentric, adjustable underside

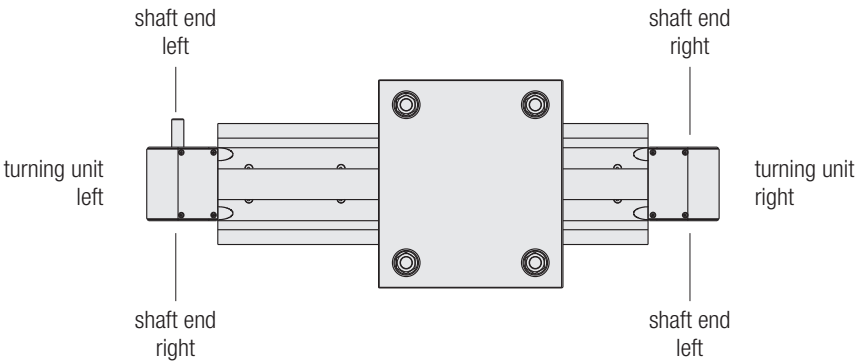
¹⁰⁾ 21 = ball
25 = slide; synthetic
28 = slide; ceramics

¹¹⁾ A = HTD5M
B = HTD8M

¹²⁾ G = fiber glass
S = steel

¹³⁾ 1 = for motor with hollow shaft
2 = for motor with shaft
3 = for motor with base

¹⁴⁾ 0 = without
1 = left
2 = right
3 = double sided

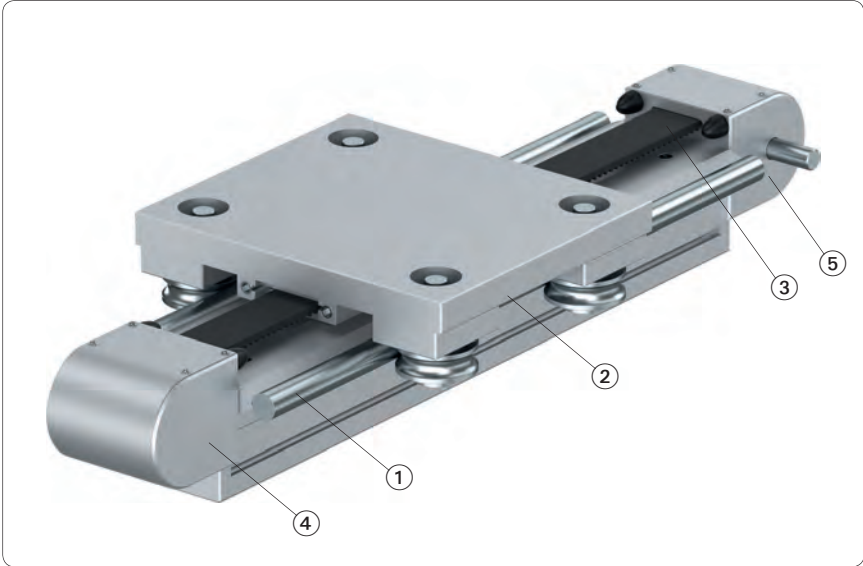


additional required order information:

- lift
- carriage length

Linear unit

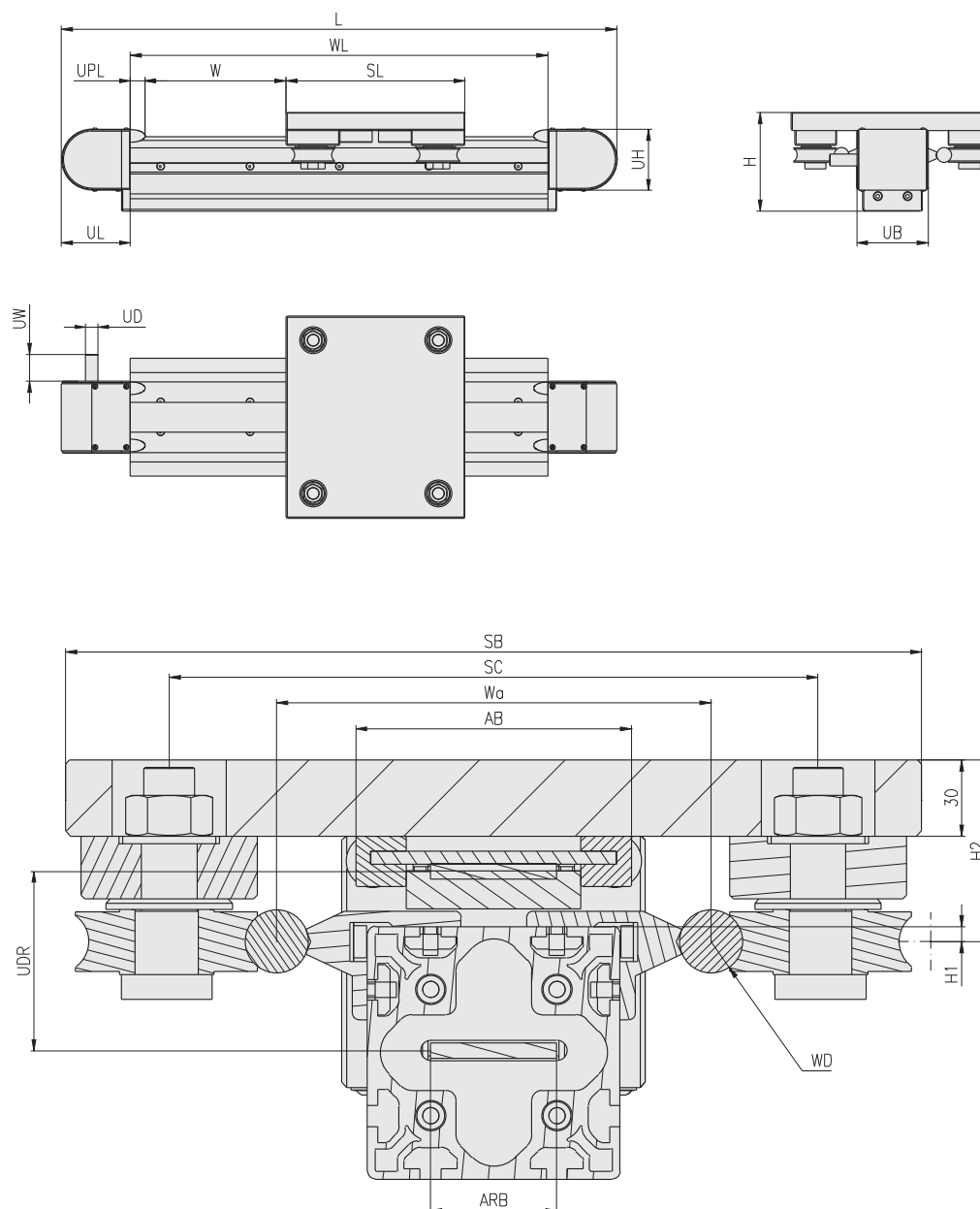
- with toothed belt drive
- with wheel guide



Component groups of linear units

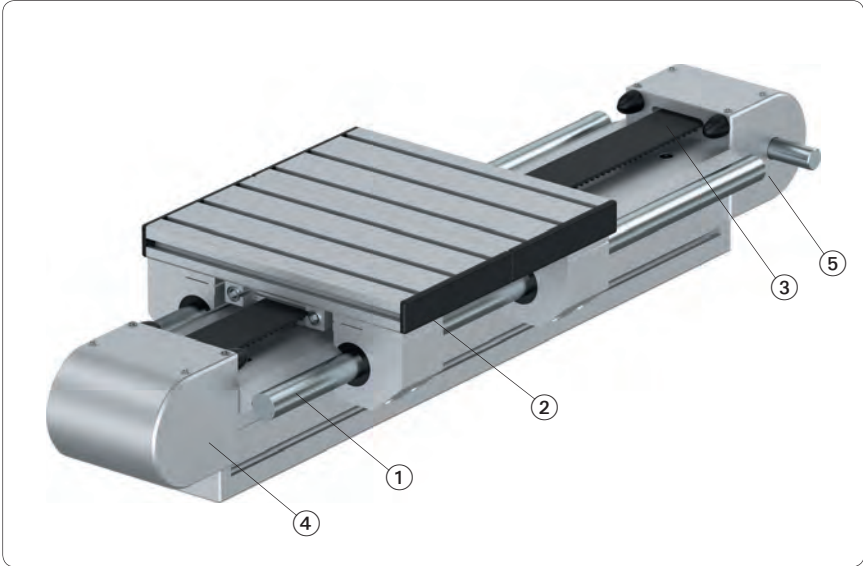
Ordering description:

Article-No.	Description	
4.101...	Linear unit complete including:	
① 4.119...	Linear shaft guidance	
② 4.121...	Carriage unit	(catalogue in preparation)
③ 4.131...	Drive unit	(catalogue in preparation)
④ 4.141...	Turning unit without shaft end	(catalogue in preparation)
⑤ 4.151...	Turning unit with shaft end	(catalogue in preparation)
⑥ 4.161...	Motor flange	(catalogue in preparation)
⑦ 4.171...	Synchronising unit	(catalogue in preparation)
⑧ 4.181...	Gearbox unit	(catalogue in preparation)

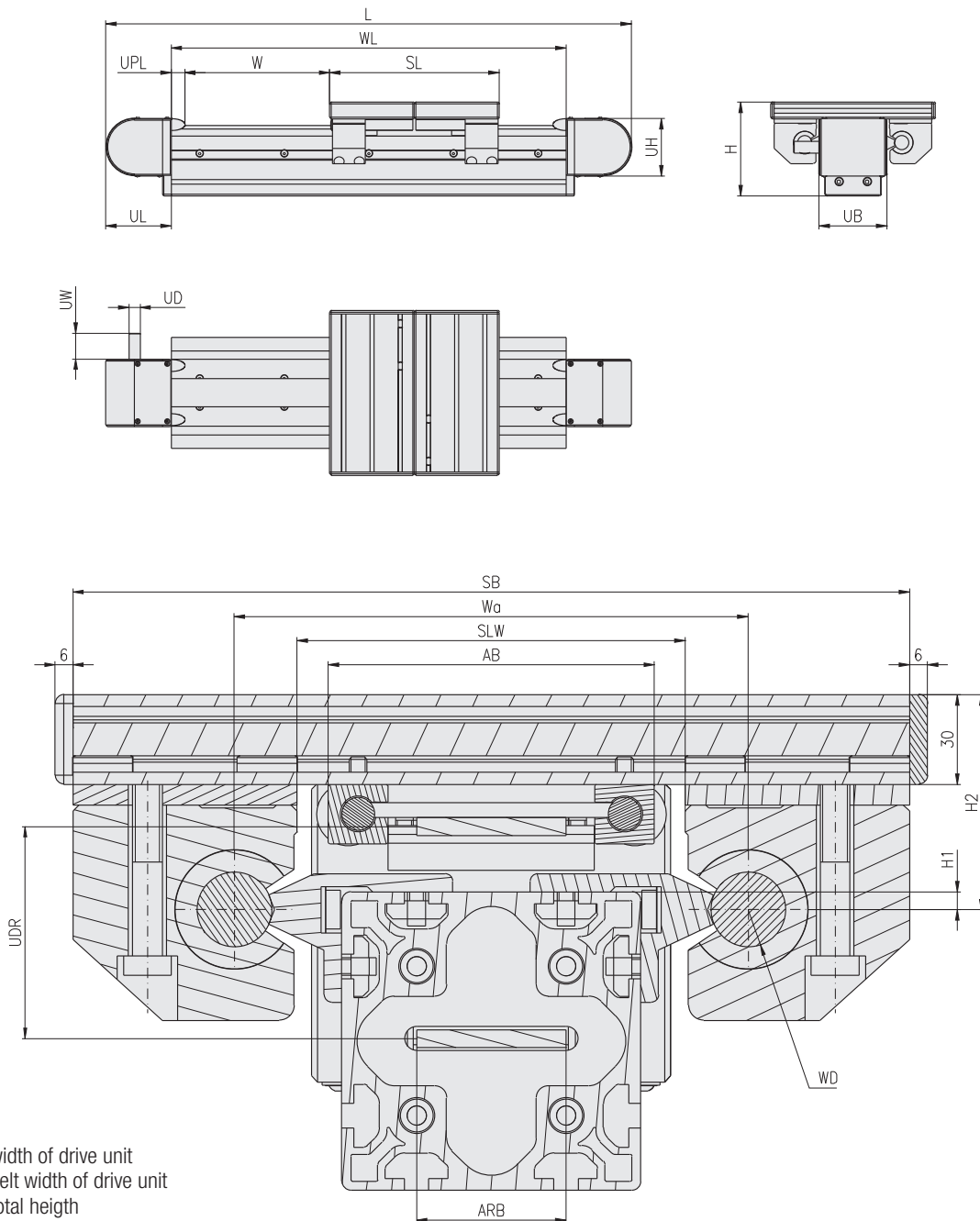


- AB = width of drive unit
- ARB = belt width of drive unit
- H = total height
- H1 = height from shaft center to upper edge of profile
- H2 = height from shaft center to upper edge of carriage
- L = total length
- SB = width of carriage
- SC = center distance from ball bearing to carriage
- SL = length of carriage
- UB = width of turning unit
- UD = shaft end diameter of turning unit
- UDR = pinion diameter of turning unit
- UH = height of turning unit
- UL = length of turning unit
- UPL = parabolic spring length of turning unit
- UW = shaft end length of turning unit
- W = lift
- Wa = axle distance of shaft guidance
- WD = diameter of shaft guidance
- WL = profile length of shaft guidance

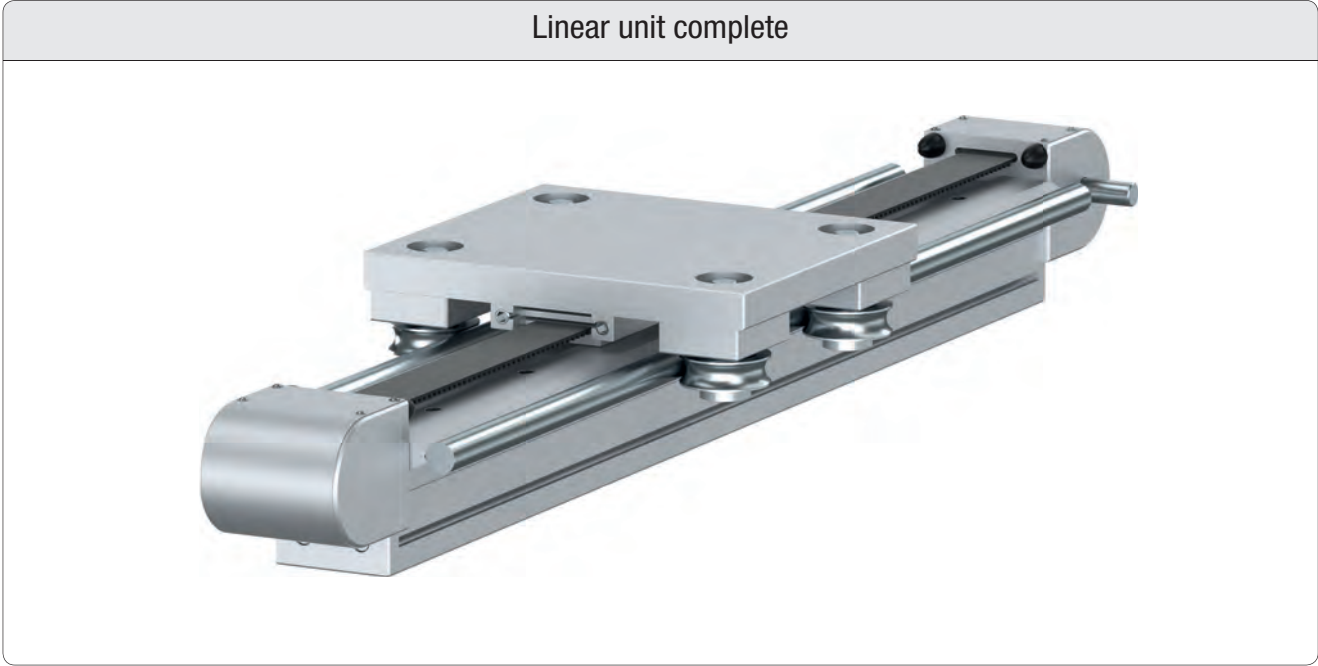
- Linear unit
- with toothed belt drive
 - with ball bearing guide



Component groups of linear units			
Ordering description:			
	Article-No.	Description	
	4.101...	Linear unit complete including:	
①	4.119...	Linear shaft guidance	
②	4.121...	Carriage unit	(catalogue in preparation)
③	4.131...	Drive unit	(catalogue in preparation)
④	4.141...	Turning unit without shaft end	(catalogue in preparation)
⑤	4.151...	Turning unit with shaft end	(catalogue in preparation)
⑥	4.161...	Motor flange	(catalogue in preparation)
⑦	4.171...	Synchronising unit	(catalogue in preparation)
⑧	4.181...	Gearbox unit	(catalogue in preparation)



- AB = width of drive unit
- ARB = belt width of drive unit
- H = total height
- H1 = height from shaft center to upper edge of profile
- H2 = height from shaft center to upper edge of carriage
- L = total length
- SB = width of carriage
- SC = center distance from ball bearing to carriage
- SL = length of carriage
- SLW = clear width of carriage
- UB = width of turning unit
- UD = shaft end diameter of turning unit
- UDR = pinion diameter of turning unit
- UH = height of turning unit
- UL = length of turning unit
- UPL = parabolic spring length of turning unit
- UW = shaft end length of turning unit
- W = lift
- Wa = axle distance of shaft guidance
- WD = diameter of shaft guidance
- WL = profile length of shaft guidance

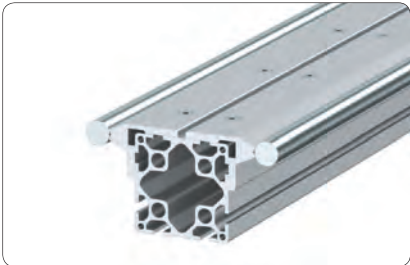


Linear shaft guidance

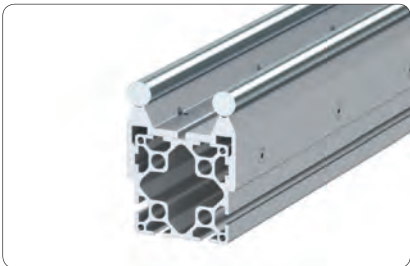
Single profile design

Frame design

horizontal



vertical



Shaft-Ø

12 mm

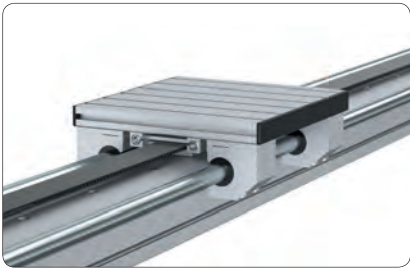
16 mm

20 mm

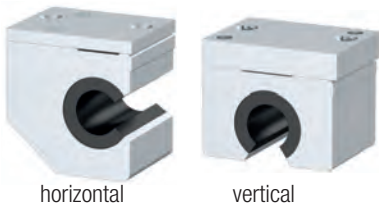
25 mm

Carriage unit

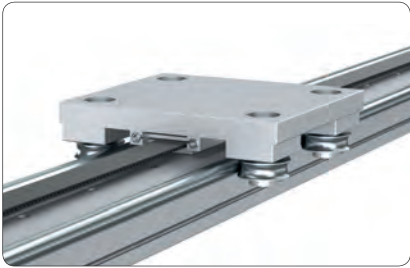
Encased guide block



Sliding guide block / ball bearing guide



Exposed roller guide



Roller

fixed



Eccentric



adjustable topside

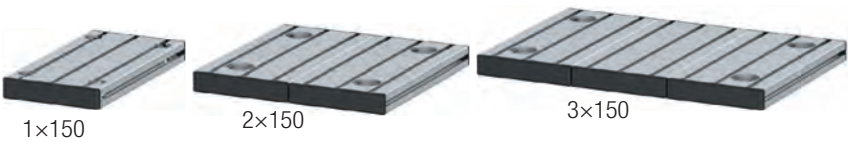
adjustable underside

Carriage plates

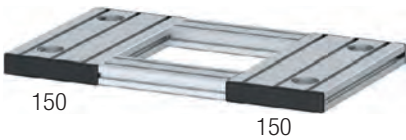
Alu plate



Profile plate



Profile frame



Drive unit



Toothed belt		
-Type:	5M	8M
-width:	15	20
	25	30
		50

Turning unit

Shaft



Shaft

